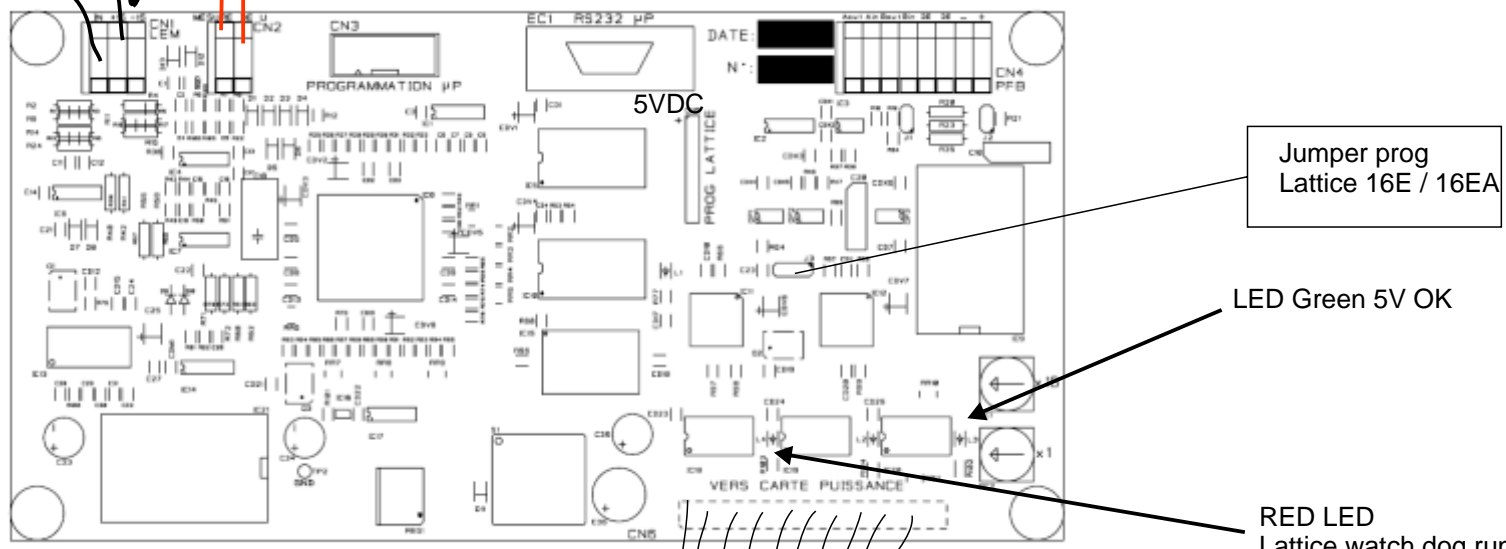
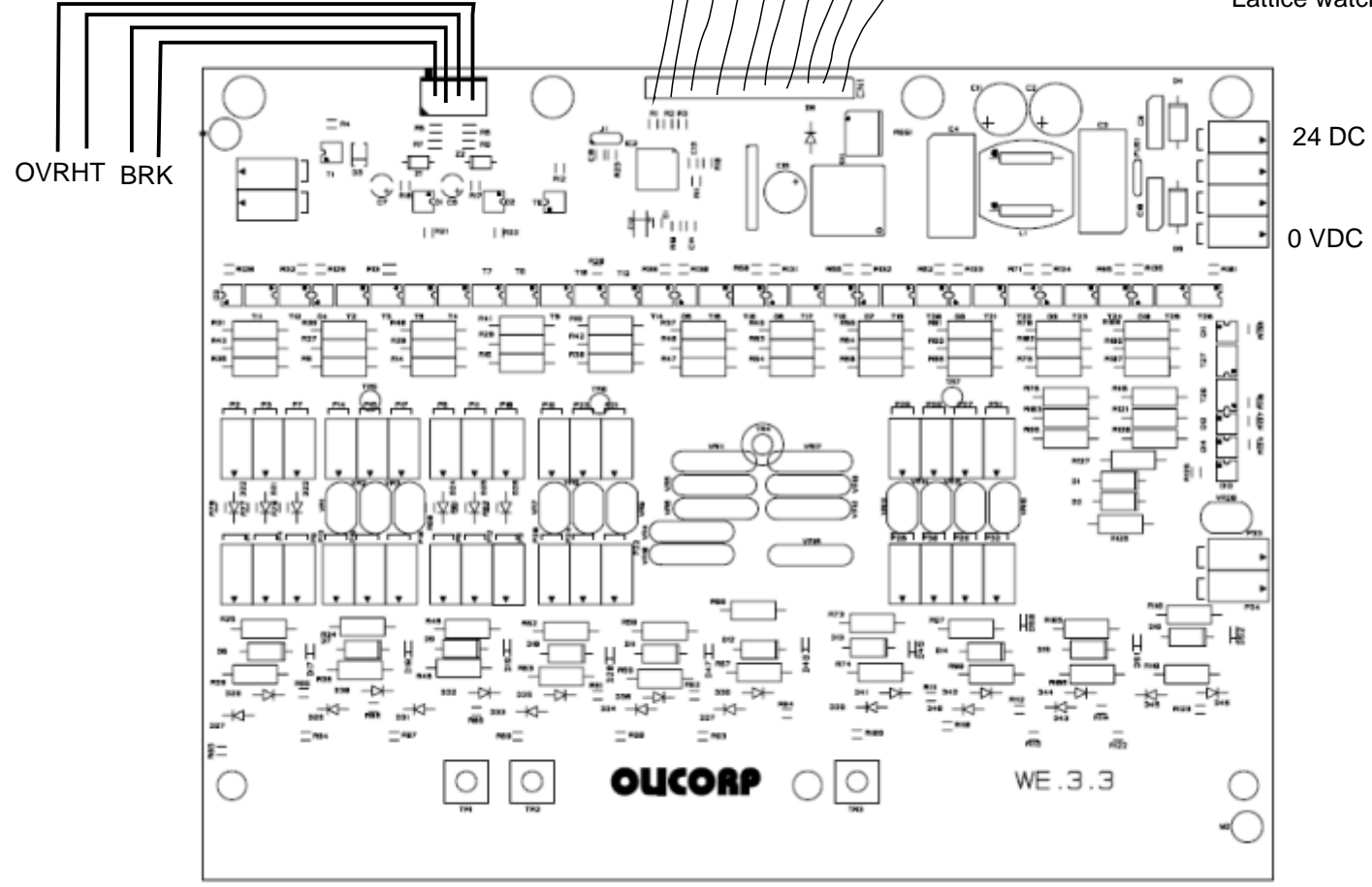


R  -15V

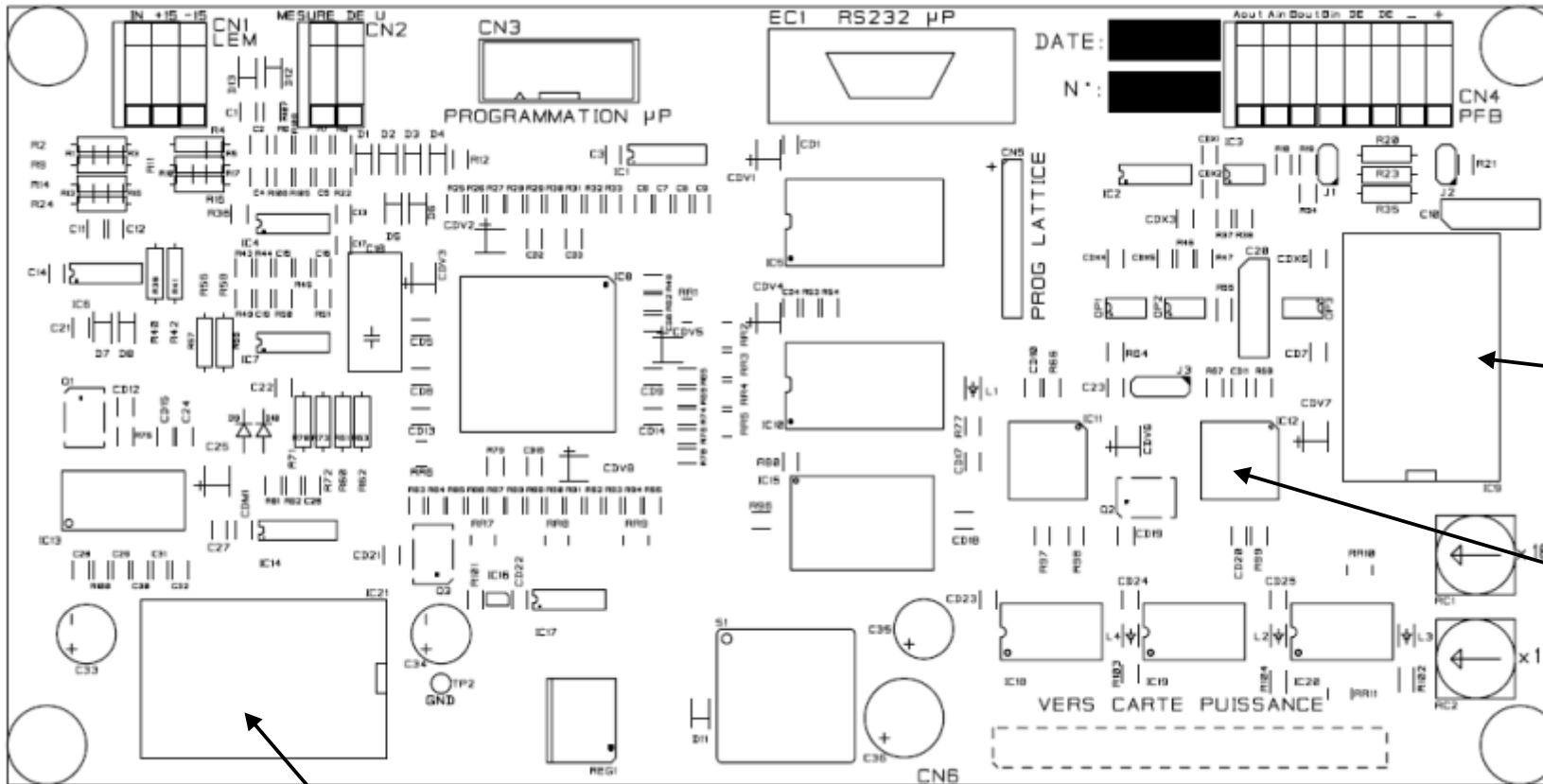
0-20 VAC = 0 - 400 VAC



1. Plug 24 Dc to power board.
2. Test 5VDC on CPU board
Green LED
5 VDC on the Lattice connector
3. Test 15VDC on Cn1 connectors
4. Connect PC with Supervisor
5. Connect status OK ?
FW 20.16 Hw101 on the bottom right
6. Click monitor mode
7. Open/ close bRK and OVRHT. the message cutout and overheat should appear disappear
8. Set 18 VAC on Cn2. voltage read should be 360 VAC on supervisor
9. Cn4 PFBUS can not test without PLC or HMS interface.
10. plug the R = 5 kohm in Cn1 to connect +15 to IN. Turn on the 18-20 VAC on Cn2. Turn on oven on the supervisor. Open the calibration wizard on the supervisor. I measured should be 6000 mA.



If all this is OK. CPU should be OK

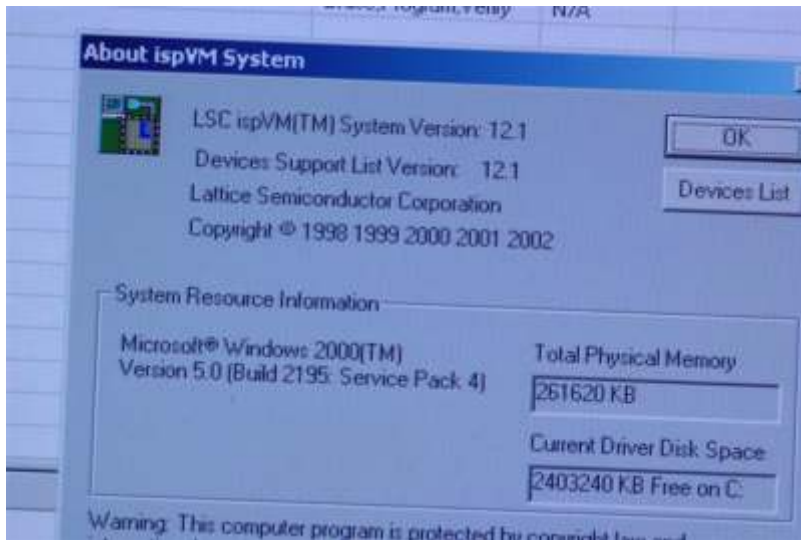
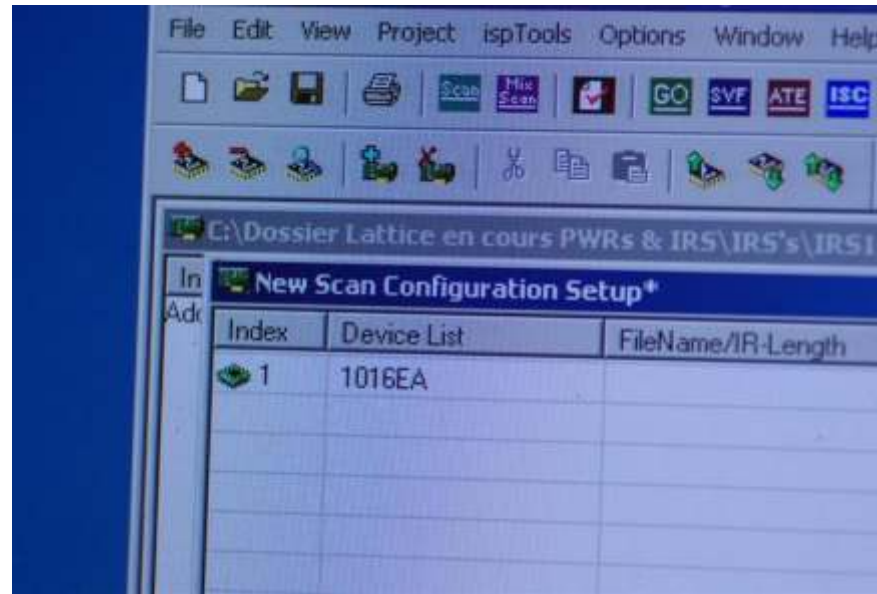


NO 15 VDC
TRACO DEAD

NO 5 VDC
TRACO DEAD

BRK ON/OFF
OVRHT ON/OF
NO EFFECT

= Lattice badly
programmed



Programming LATTICE.

Jumper should be moved depending on version 1016E and 1016EA. Also the program is different for 1016E and 1016EA as i remember

Programming.. Need a special cable.. and a programming software ISPWM

Problems :

- The program software ispwm is not edited anymore
- The program needs a fix from lattice to work with ISPLL1016E and EA which are not by default in the program,

- I had issues with drivers also for USB cable. finally i run the system on old Win_NT system with parrallel cable.